



APS/B

Fundus Camera



OPHTHALMOLOGY / ENT

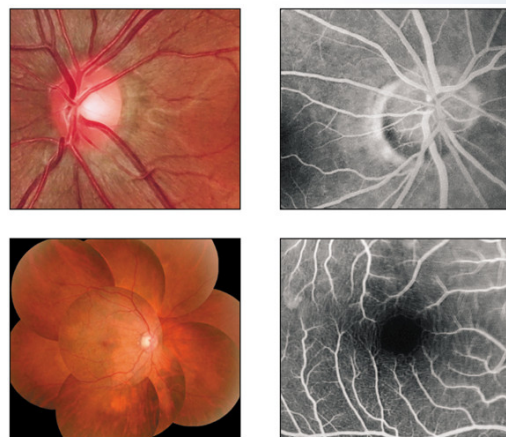
APS/B

Fundus Camera



Cod. APS/B

- ✓ Color photos
- ✓ Black/white photos
- ✓ Black/white videos

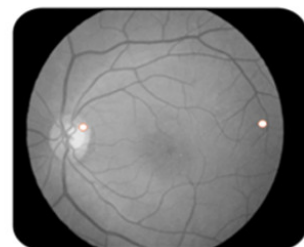


Technical Features

Working mode	Mydriatic/Non Mydriatic/FFA
Focus Aid	Eye position dots
Display	Computer screen and anterior LCD screen (optional)
Camera Resolution	12 MEGA (72 pixels per degree minimum)
Capture card	
Professional Software	
Working distance	40mm
Field of view	53°
Horizontal angle	±30°
Longitudinal angle	±15°
Colour resolution	12 mega
Black/white resolution	≥ 0.42 mega pixels
Chin rest distance	70mm
Electric-table distance	200mm
Light adjustment	Inching and coarse stepless adjustment
Fixation lamp	Red LED
Working lamp	12V 60W
Power supply	AC 220V 50Hz
Weight	50kg
Image file formats	Default BMP and JPG. The JPG image is compressed max to 50:1
Documents management	Search with name, age, sex, diagnosis and any other condition input
Image post processing	Brightness, contrast, gamma, color, measure, smooth, sharp, etc
Image patching up	Combine to a whole fundus image



Built-in digital capture system, resolution up to 1390 line



Easy eye position adjustment, it just need to align the two dots to its brillancy



Internal fixation to improve patient cooperation, 5-internal fixation (optional)



Optional 7" LCD screen to Improve the observation